

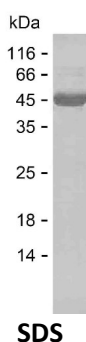
Product Name: Recombinant Human KIF2A Protein
Catalog #: PEH7364



Summary

Name	KIF2A_HUMAN
Purity	Greater than 85% as determined by reducing SDS-PAGE
Endotoxin level	Please contact with the lab for this information
Tag	C-His
Accession #	O00139
Host	E.coli
Species	Human
Molecular Mass	47 kDa
Buffer	Lyophilized from Phosphate buffered saline
Shipping	The product is shipped on dry ice/polar packs. Upon receipt, store it immediately at the temperature listed below.
Stability&Storage	Store at $\leq -70^{\circ}\text{C}$, stable for 12 months after receipt. Store at $\leq -70^{\circ}\text{C}$, stable for 3 months under sterile conditions after opening. Please minimize freeze-thaw cycles.
Sequence	KEVEKLQEKR EKRRLQQQEL REKRAQDVDA TNPNYEIMCM IRDFRGSLDY RPLTTADPID EHRICVCVRK RPLNKKETQM KDLDVITIPS KDVVMVHEPK QKVDLTRYLE NQTFRFDYAF DDSAPNEMVY RFTARPLVET IFERGMATCF AYGQTGSGKT HTMGGDFSGK NQDCSKGIYA LAARDVFLML KKPNYKKLEL QVYATFFEIY SGKVFDLLNR KTKLRVLEDG KQQVQVVLQ EREVKCVEDV LKLIDIGNSC RTSGQTSANA HSSRSHAVFQ IILRRKGLH GKFSIDLALG NERGADTSSA DRQTRLEGAE INKSLALKE CIRALGRNKP HTPFRASKLT QVLRDSFIGE NSRTCMIATI SPGMASCENT LNTLRYANRV

image



Background

Alternative Names Kinesin-like protein KIF2A (Kinesin-2) (hK2)

Product Name: Recombinant Human KIF2A Protein
Catalog #: PEH7364



Note

For Research Use Only , Not for Diagnostic Use