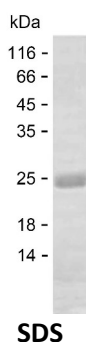


Summary

Name	GUCY1B1_HUMAN
Purity	Greater than 85% as determined by reducing SDS-PAGE
Endotoxin level	Please contact with the lab for this information
Tag	C-His
Accession #	Q02153
Host	E.coli
Species	Human
Molecular Mass	24 kDa
Buffer	Phosphate buffered saline
Shipping	The product is shipped on dry ice/polar packs. Upon receipt, store it immediately at the temperature listed below.
Stability&Storage	Store at $\leq -70^{\circ}\text{C}$, stable for 6 months after receipt. Store at $\leq -70^{\circ}\text{C}$, stable for 3 months under sterile conditions after opening. Please minimize freeze-thaw cycles.
Sequence	VWEDIKKEAQ LDEEGQFLVR IYDDSKTYD LVAAASKVLN LNAGEILQMF GKMFFVFCQE SGYDTILRVL GSNVREFLQN LDALHDHLAT IYPGMRAPSF RCTDAEKGKG LILHYYSERE GLQDIVIGII KTVAQQIHGT EIDMKVIQQR NEECDHTQFL IEEKESKEED FYEDLDRFEE NGTQESRISP

image



Background

Alternative Names	Guanylate cyclase soluble subunit beta-1 (GCS-beta-1) (EC 4.6.1.2) (Guanylate cyclase soluble subunit beta-3) (GCS-beta-3) (Soluble guanylate cyclase small subunit)
--------------------------	--

Note

Product Name: Recombinant Human GUCY1B1 Protein
Catalog #: PEH7289



For Research Use Only , Not for Diagnostic Use