

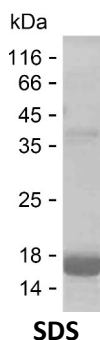
Product Name: Recombinant Human ATP2C1 Protein
Catalog #: PEH7285



Summary

Name	AT2C1_HUMAN
Purity	Greater than 85% as determined by reducing SDS-PAGE
Endotoxin level	Please contact with the lab for this information
Tag	C-His
Accession #	P98194
Host	E.coli
Species	Human
Molecular Mass	16 kDa
Buffer	Lyophilized from Phosphate buffered saline
Shipping	The product is shipped on dry ice/polar packs. Upon receipt, store it immediately at the temperature listed below.
Stability&Storage	Store at $\leq -70^{\circ}\text{C}$, stable for 12 months after receipt. Store at $\leq -70^{\circ}\text{C}$, stable for 3 months under sterile conditions after opening. Please minimize freeze-thaw cycles.
Sequence	LSKLVPECH CVREGKLEHT LARDLVPGDT VCLSVGDRVP ADLRLF EAVD LSIDESSLTG ETTPCSKVTA PQPAATNGDL ASRSNIAFMG TLVRCGKAKG VVIGTGENSE FGEVFKMMQA EEAPKTPLQK

image



Background

Alternative Names Calcium-transporting ATPase type 2C member 1 (ATPase 2C1) (EC 7.2.2.10) (ATP-dependent Ca²⁺ pump PMR1)

Note

For Research Use Only , Not for Diagnostic Use