

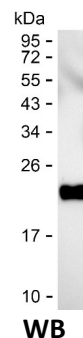
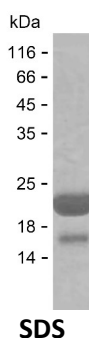
Product Name: Recombinant Human KIF11 Protein
Catalog #: PEH7271



Summary

Name	KIF11_HUMAN
Purity	Greater than 85% as determined by reducing SDS-PAGE
Endotoxin level	Please contact with the lab for this information
Tag	C-His
Accession #	P52732
Host	E.coli
Species	Human
Molecular Mass	19 kDa
Buffer	Phosphate buffered saline
Shipping	The product is shipped on dry ice/polar packs. Upon receipt, store it immediately at the temperature listed below.
Stability&Storage	Store at $\leq -70^{\circ}\text{C}$, stable for 6 months after receipt. Store at $\leq -70^{\circ}\text{C}$, stable for 3 months under sterile conditions after opening. Please minimize freeze-thaw cycles.
Sequence	EIERLKRDLA AAREKNGVYI SEENFRVMSG KLTVQEEQIV ELIEKIGAVE EELNRVTELF MDNKNELDQC KSDLQNKTQE LETTQKHLQE TKLQLVKEEY ITSALESTEE KLHDAASKLL NTVEETTKDV SGLHSLDRK KAVDQHNAEA

image



Background

Alternative Names	Kinesin-like protein KIF11 (Kinesin-like protein 1) (Kinesin-like spindle protein HKSP) (Kinesin-related motor protein Eg5) (Thyroid receptor-interacting protein 5) (TR-interacting protein 5) (TRIP-5)
--------------------------	--

Note

For Research Use Only , Not for Diagnostic Use

Product Name: Recombinant Human KIF11 Protein
Catalog #: PEH7271

