

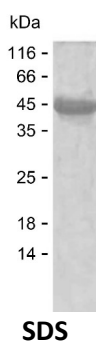
Product Name: Recombinant Human PRKCI Protein
Catalog #: PEH7255



Summary

Name	KPCI_HUMAN
Purity	Greater than 85% as determined by reducing SDS-PAGE
Endotoxin level	Please contact with the lab for this information
Tag	C-His
Accession #	P41743
Host	E.coli
Species	Human
Molecular Mass	43 kDa
Buffer	Phosphate buffered saline
Shipping	The product is shipped on dry ice/polar packs. Upon receipt, store it immediately at the temperature listed below.
Stability&Storage	Store at $\leq -70^{\circ}\text{C}$, stable for 6 months after receipt. Store at $\leq -70^{\circ}\text{C}$, stable for 3 months under sterile conditions after opening. Please minimize freeze-thaw cycles.
Sequence	ESGKASSSLG LQDFDLLRVI GRGSYAKVLL VRLKKTDRIV AMKVVKKELV NDDDEDIDWVQ TEKHVFEQAS NHPFLVGLHS CFQTESRLFF VIEYVNGGDL MFHMQRQRKL PEEHARFYSA EISLALNYLH ERGIYRDLK LDNVLLDSEG HIKLTDYGMC KEGLRPGDTT STFCGTPNYI APEILRGEDY GFSVDWWALG VLMFEMMAGR SPFDIVGSSD NPDQNTEDYL FQVILEKQIR IPRSLSVKAA SVLKSFLNKD PKERLGCHPQ TGFADIQGHP FFRNVDWDMM EQKQVPPFK PNISGEFGLD NFDSQFTNEP VQLTPDDDDI VRKIDQSEFE GFEYINPLLM

image



Background

Alternative Names Protein kinase C iota type (EC 2.7.11.13) (Atypical protein kinase C-lambda/iota) (PRKC-lambda/iota) (aPKC-lambda/iota) (nPKC-iota)

Product Name: Recombinant Human PRKCI Protein
Catalog #: PEH7255



Note

For Research Use Only , Not for Diagnostic Use