

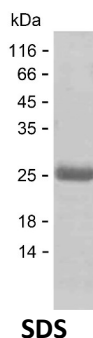
Product Name: Recombinant Human LAMC2 Protein
Catalog #: PEH7156



Summary

Name	LAMC2_HUMAN
Purity	Greater than 85% as determined by reducing SDS-PAGE
Endotoxin level	Please contact with the lab for this information
Tag	C-His
Accession #	Q13753
Host	E.coli
Species	Human
Molecular Mass	22 kDa
Buffer	Lyophilized from Phosphate buffered saline
Shipping	The product is shipped on dry ice/polar packs. Upon receipt, store it immediately at the temperature listed below.
Stability&Storage	Store at $\leq -70^{\circ}\text{C}$, stable for 12 months after receipt. Store at $\leq -70^{\circ}\text{C}$, stable for 3 months under sterile conditions after opening. Please minimize freeze-thaw cycles.
Sequence	AGEALEISSE IEQEIGSLNL EANVTADGAL AMEKGLASLK SEMREVEGEL ERKELEFDTN MDAVQMVITE AQKVDTRAKN AGVTIQDTLN TLDGLLHLM QPLSVDEEGL VLLEQKLSRA KTQINSQLRP MMSELEERAR QQRGHLHLL TSIDGILADV KNLENIRDNL PPGCYNTQAL

image



Background

Alternative Names	Laminin subunit gamma-2 (Cell-scattering factor 140 kDa subunit) (CSF 140 kDa subunit) (Epiligrin subunit gamma) (Kalinin subunit gamma) (Kalinin/nicein/epiligrin 100 kDa subunit) (Ladsin 140 kDa subunit) (Laminin B2t chain) (Laminin-5 subunit gamma) (Large adhesive scatter factor 140 kDa subunit) (Nicein subunit gamma)
--------------------------	---

Product Name: Recombinant Human LAMC2 Protein
Catalog #: PEH7156



Note

For Research Use Only , Not for Diagnostic Use