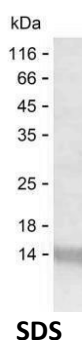


Summary

Name	AT2A1_HUMAN
Purity	Greater than 85% as determined by reducing SDS-PAGE
Endotoxin level	Please contact with the lab for this information
Tag	C-His
Accession #	O14983
Host	E.coli
Species	Human
Molecular Mass	12 kDa
Buffer	Phosphate buffered saline
Shipping	The product is shipped on dry ice/polar packs. Upon receipt, store it immediately at the temperature listed below.
Stability&Storage	Store at $\leq -70^{\circ}\text{C}$, stable for 6 months after receipt. Store at $\leq -70^{\circ}\text{C}$, stable for 3 months under sterile conditions after opening. Please minimize freeze-thaw cycles.
Sequence	RAYTGREFDD LPLAEQREAC RRACCFARVE PSHKSKIVEY LQSYDEITAM TGDGVNDAPA LKKAIEGIAM GSGTAVAKTA SEMVLADDNF

image



Background

Alternative Names	Sarcoplasmic/endoplasmic reticulum calcium ATPase 1 (SERCA1) (SR Ca ²⁺ -ATPase 1) (EC 7.2.2.10) (Calcium pump 1) (Calcium-transporting ATPase sarcoplasmic reticulum type, fast twitch skeletal muscle isoform) (Endoplasmic reticulum class 1/2 Ca ²⁺ ATPase)
--------------------------	--

Note

For Research Use Only , Not for Diagnostic Use

Product Name: Recombinant Human ATP2A1 Protein
Catalog #: PEH7123

