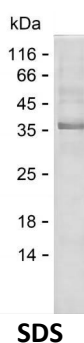


Summary

Name	LDHC_HUMAN
Purity	Greater than 85% as determined by reducing SDS-PAGE
Endotoxin level	Please contact with the lab for this information
Tag	C-His
Accession #	P07864
Host	E.coli
Species	Human
Molecular Mass	37 kDa
Buffer	Phosphate buffered saline
Shipping	The product is shipped on dry ice/polar packs. Upon receipt, store it immediately at the temperature listed below.
Stability&Storage	Store at $\leq -70^{\circ}\text{C}$, stable for 6 months after receipt. Store at $\leq -70^{\circ}\text{C}$, stable for 3 months under sterile conditions after opening. Please minimize freeze-thaw cycles.
Sequence	MSTVKEQLIE KLIEDDENSQ CKITIVGTGA VGMACAISIL LKDLADELAL VDVALDKLKG EMMDLQHGS L FFSTSKITSG KDYSVSANSR IVIVTAGARQ QEGETRLALV QRNVAIMKSI IPAIVHYSPD CKILVVSNPV DILTYIVWKI SGLPVTRVIG SGCNLD SARF RYLIGEKLGV HPTSCHGWII GEHGDSSVPL WSGVNVAGVA LKTLDPKLG T DSDKEHWKNI HKQVIQSAYE IIKLKGYSW AIGLSVMDLV GSILKNLRRV HPVSTMVKGL YGIKEELFLS IPCVLGRNGV SDVVKINLNS EEEALFKKSA ETLWNIQKDL IF

image



Background

Alternative Names	L-lactate dehydrogenase C chain (LDH-C) (EC 1.1.1.27) (Cancer/testis antigen 32) (CT32) (LDH testis subunit) (LDH-X)
--------------------------	--

Product Name: Recombinant Human LDHC Protein
Catalog #: PEH7032



Note

For Research Use Only , Not for Diagnostic Use