

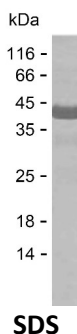
**Product Name: Recombinant Human MAPK11 Protein**  
**Catalog #: PEH7028**



## Summary

<b>Name</b>	MK11_HUMAN
<b>Purity</b>	Greater than 85% as determined by reducing SDS-PAGE
<b>Endotoxin level</b>	Please contact with the lab for this information
<b>Tag</b>	C-His
<b>Accession #</b>	Q15759
<b>Host</b>	E.coli
<b>Species</b>	Human
<b>Molecular Mass</b>	42 kDa
<b>Buffer</b>	Phosphate buffered saline
<b>Shipping</b>	The product is shipped on dry ice/polar packs. Upon receipt, store it immediately at the temperature listed below.
<b>Stability&amp;Storage</b>	Store at $\leq -70^{\circ}\text{C}$ , stable for 6 months after receipt. Store at $\leq -70^{\circ}\text{C}$ , stable for 3 months under sterile conditions after opening. Please minimize freeze-thaw cycles.
<b>Sequence</b>	MSGPRAGFYR QELNKTVWEV PQLRQGLRPV GSGAYGSVCS AYDARLRQKV AVKKLSRPFQ SLIHARTYR ELRLKHLKH ENVIGLLDVF TPATSIEDFS EVYLVTTLMG ADLNNIVKCQ ALSDEHVQFL VYQLLRGLKY IHSAGIIHRD LKPSNVAVNE DCELRILDFG LARQADEEMT GYVATR WYRA PEIMLNWMHY NQTVDIWSVG CIMAELLQ GK ALFPGSDYID QLK RIMEVVG TPSPEVLAKI SSEHARTYIQ SLPPMPQKDL SSIFRGANPL AIDLLGRMLV LDSDQRVSAA EALAHAYFSQ YHDPEDPEEA EPYDESVEAK ERTLEEWKEL TYQEVLSFKP PEPPKPPGSL EIEQ

## image



## Background

**Alternative Names** Mitogen-activated protein kinase 11 (MAP kinase 11) (MAPK 11) (EC

**Product Name: Recombinant Human MAPK11 Protein**  
**Catalog #: PEH7028**



---

2.7.11.24) (Mitogen-activated protein kinase p38 beta) (MAP kinase p38 beta) (p38b) (Stress-activated protein kinase 2b) (SAPK2b) (p38-2)

**Note**

For Research Use Only , Not for Diagnostic Use