

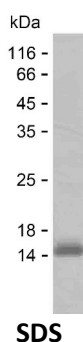
Product Name: Recombinant Human GCM1 Protein
Catalog #: PEH7005



Summary

Name	GCM1_HUMAN
Purity	Greater than 85% as determined by reducing SDS-PAGE
Endotoxin level	Please contact with the lab for this information
Tag	C-His
Accession #	Q9NP62
Host	E.coli
Species	Human
Molecular Mass	10 kDa
Buffer	Lyophilized from Phosphate buffered saline
Shipping	The product is shipped on dry ice/polar packs. Upon receipt, store it immediately at the temperature listed below.
Stability&Storage	Store at $\leq -70^{\circ}\text{C}$, stable for 12 months after receipt. Store at $\leq -70^{\circ}\text{C}$, stable for 3 months under sterile conditions after opening. Please minimize freeze-thaw cycles.
Sequence	EHDHPKPETK LEAEARRAMK KVNTAPSSVS LSLKGSTETR SLPGETQSQG SLPLTWSFQE GVQLPGSYSG HLIANTPQQN

image



Background

Alternative Names Chorion-specific transcription factor GCMa (hGCMa) (GCM motif protein 1) (Glial cells missing homolog 1)

Note

For Research Use Only , Not for Diagnostic Use