

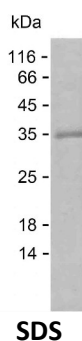
Product Name: Recombinant Human CPPED1 Protein
Catalog #: PEH6892



Summary

Name	CPPED_HUMAN
Purity	Greater than 85% as determined by reducing SDS-PAGE
Endotoxin level	Please contact with the lab for this information
Tag	C-His
Accession #	Q9BRF8
Host	E.coli
Species	Human
Molecular Mass	36 kDa
Buffer	Lyophilized from Phosphate buffered saline
Shipping	The product is shipped on dry ice/polar packs. Upon receipt, store it immediately at the temperature listed below.
Stability&Storage	Store at $\leq -70^{\circ}\text{C}$, stable for 12 months after receipt. Store at $\leq -70^{\circ}\text{C}$, stable for 3 months under sterile conditions after opening. Please minimize freeze-thaw cycles.
Sequence	MSAAEAGGVF HRARGRTLAA FPAEKESWK GPFYFILGAD PQFGLIKAWS TGDCDNGGDE WEQEIRLTEQ AVQAINKLNPKPKFFVLCGD LIHAMPGKPW RTEQTEDLKR VLRAVDRAIP LVLVSGNHDI GNTPTAETVE EFCRTWGDDY FSFWVGGVLF LVLNSQFYEN PSKCPSLKQA QDQWLDEQLS IARQRHCQHA IVFQHIPLFL ESIDEDDDYY FNLSKSTRKK LADKFIHAGV KVVFSGHYHR NAGGTYQNLDMVVSSAIGCQLGRDPHGLRV VVVTAEKIVH RYYSLELSE KGIEDDLMDLIK

image



Background

Alternative Names Serine/threonine-protein phosphatase CPPED1 (EC 3.1.3.16) (Calcineurin-like phosphoesterase domain-containing protein 1) (Complete S-

Product Name: Recombinant Human CPPED1 Protein
Catalog #: PEH6892



transactivated protein 1)

Note

For Research Use Only , Not for Diagnostic Use