

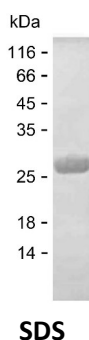
Product Name: Recombinant Human LYPLA1 Protein
Catalog #: PEH6856



Summary

Name	LYPA1_HUMAN
Purity	Greater than 85% as determined by reducing SDS-PAGE
Endotoxin level	Please contact with the lab for this information
Tag	C-His
Accession #	O75608
Host	E.coli
Species	Human
Molecular Mass	25 kDa
Buffer	Lyophilized from Phosphate buffered saline
Shipping	The product is shipped on dry ice/polar packs. Upon receipt, store it immediately at the temperature listed below.
Stability&Storage	Store at $\leq -70^{\circ}\text{C}$, stable for 12 months after receipt. Store at $\leq -70^{\circ}\text{C}$, stable for 3 months under sterile conditions after opening. Please minimize freeze-thaw cycles.
Sequence	MCGNNMSTPL PAIVPAARKA TAAVIFLHGL GDTGHGWAEA FAGIRSSHIK YICPHAPVRP VTLNMNVAMP SWFDIIGLSP DSQEDESGIK QAAENIKALI DQEVKNGIPS NRIILGGFSQ GGALSLYTAL TTQQKLAGVT ALSCWLPLRA SFPQGPIGGA NRDISILQCH GDCDPLVPLM FGSLTVEKLK TLVNPANVTF KTYEGMMHSS CQEMMDVKQ FIDKLLPPID

image



Background

Alternative Names Acyl-protein thioesterase 1 (APT-1) (hAPT1) (EC 3.1.2.-) (Lysophospholipase 1) (Lysophospholipase I) (LPL-I) (LysoPLA I)

Note

Product Name: Recombinant Human LYPLA1 Protein
Catalog #: PEH6856



For Research Use Only , Not for Diagnostic Use