

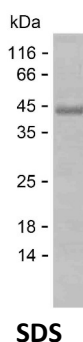
Product Name: Recombinant Human PDCD1LG2 Protein
Catalog #: PEH6828



Summary

| | |
|------------------------------|--|
| Name | PD1L2_HUMAN |
| Purity | Greater than 85% as determined by reducing SDS-PAGE |
| Endotoxin level | Please contact with the lab for this information |
| Tag | N-SUMO & C-His |
| Accession # | Q9BQ51 |
| Host | E.coli |
| Species | Human |
| Molecular Mass | 35 kDa |
| Buffer | Phosphate buffered saline |
| Shipping | The product is shipped on dry ice/polar packs. Upon receipt, store it immediately at the temperature listed below. |
| Stability&Storage | Store at $\leq -70^{\circ}\text{C}$, stable for 6 months after receipt. Store at $\leq -70^{\circ}\text{C}$, stable for 3 months under sterile conditions after opening. Please minimize freeze-thaw cycles. |
| Sequence | FTVTVPKELY IIEHGSNVTL ECNFDTGSHV NLGAITASLQ KVENDTSPHR ERATLLEEQL PLGKASFHIP QVQVRDEGQY QCIIYGVAV DYKYLTLKVK ASYRKINTHI LKVPETDEVE LTCQATGYPL AEVSWPNVSV PANTSHSRTP EGLYQVTSVL RLKPPPGRNF SCVFWNTHVR ELTLASIDLQ |

image



Background

Alternative Names Programmed cell death 1 ligand 2 (PD-1 ligand 2) (PD-L2) (PDCD1 ligand 2) (Programmed death ligand 2) (Butyrophilin B7-DC) (B7-DC) (CD antigen CD273)

Note

Product Name: Recombinant Human PDCD1LG2 Protein
Catalog #: PEH6828



For Research Use Only , Not for Diagnostic Use