

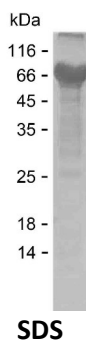
Product Name: Recombinant Human PDP1 Protein
Catalog #: PEH6821



Summary

Name	PDP1_HUMAN
Purity	Greater than 85% as determined by reducing SDS-PAGE
Endotoxin level	Please contact with the lab for this information
Tag	N-SUMO & N-His
Accession #	Q9P0J1
Host	E.coli
Species	Human
Molecular Mass	65 kDa
Buffer	Phosphate buffered saline
Shipping	The product is shipped on dry ice/polar packs. Upon receipt, store it immediately at the temperature listed below.
Stability&Storage	Store at $\leq -70^{\circ}\text{C}$, stable for 6 months after receipt. Store at $\leq -70^{\circ}\text{C}$, stable for 3 months under sterile conditions after opening. Please minimize freeze-thaw cycles.
Sequence	ASTPQKFYLT PPQVNSILKA NEYSFKVPEF DGKNVSSILG FDSNQLPANA PIEDRRSAAT CLQTRGMLLG VFDGHAGCAC SQAVSERLFY YIAVSLLPHE TLLEIENAVE SGRALLPILQ WHKHPNDYFS KEASKLYFNS LRTYWQELID LNTGESTDID VKEALINAFK RLDNDISLEA QVGDPNSFLN YLVLRVAFSG ATACVAHVVDG VDLHVANTGD SRAMLGVQEE DGSWSAVTLS NDHNAQNERE LERLKLEHPK SEAKSVVKQD RLLGLLMPFR AFGDVKFKWS IDLQKRVIES GPDQLNDNEY TKFIPPNYHT PPYLTAEPEV TYHRLRPQDK FLVLATDGLW ETMHRQDVVR IVGEYLTGMH HQQPIAVGGY KVTLGQMHGL LTERRTKMSS VFEDQNAATH LIRHAVGNNE FGTVDHERLS KMLSLPEELA RMYRDDITII VVQFNSHVVG AYQNQE

image



Background

Product Name: Recombinant Human PDP1 Protein
Catalog #: PEH6821



Alternative Names

[Pyruvate dehydrogenase [acetyl-transferring]]-phosphatase 1, mitochondrial (PDP 1) (EC 3.1.3.43) (Protein phosphatase 2C) (Pyruvate dehydrogenase phosphatase catalytic subunit 1) (PDPC 1)

Note

For Research Use Only , Not for Diagnostic Use