

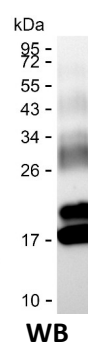
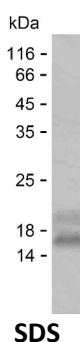
**Product Name: Recombinant Human CSTF1 Protein**  
**Catalog #: PEH6801**



## Summary

<b>Name</b>	CSTF1_HUMAN
<b>Purity</b>	Greater than 85% as determined by reducing SDS-PAGE
<b>Endotoxin level</b>	Please contact with the lab for this information
<b>Tag</b>	C-His
<b>Accession #</b>	Q05048
<b>Host</b>	E.coli
<b>Species</b>	Human
<b>Molecular Mass</b>	10 kDa
<b>Buffer</b>	Phosphate buffered saline
<b>Shipping</b>	The product is shipped on dry ice/polar packs.Upon receipt, store it immediately at the temperature listed below.
<b>Stability&amp;Storage</b>	Store at $\leq -70^{\circ}\text{C}$ , stable for 6 months after receipt.Store at $\leq -70^{\circ}\text{C}$ , stable for 3 months under sterile conditions after opening. Please minimize freeze-thaw cycles.
<b>Sequence</b>	DDTAVQYAIG RSDTVAPGTG IDLEFDADVQ TMSPEASEYE TCYVTSHKGP CRVATYSRDG QLIATGSADA

## image



## Background

<b>Alternative Names</b>	Cleavage stimulation factor subunit 1 (CF-1 50 kDa subunit) (Cleavage stimulation factor 50 kDa subunit) (CSTF 50 kDa subunit) (CstF-50)
--------------------------	--

## Note

For Research Use Only , Not for Diagnostic Use