

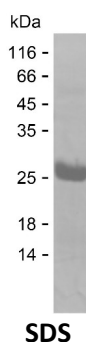
Product Name: Recombinant Human CLCN6 Protein
Catalog #: PEH6798



Summary

Name	CLCN6_HUMAN
Purity	Greater than 85% as determined by reducing SDS-PAGE
Endotoxin level	Please contact with the lab for this information
Tag	C-His
Accession #	P51797
Host	E.coli
Species	Human
Molecular Mass	22 kDa
Buffer	Lyophilized from Phosphate buffered saline
Shipping	The product is shipped on dry ice/polar packs. Upon receipt, store it immediately at the temperature listed below.
Stability&Storage	Store at $\leq -70^{\circ}\text{C}$, stable for 12 months after receipt. Store at $\leq -70^{\circ}\text{C}$, stable for 3 months under sterile conditions after opening. Please minimize freeze-thaw cycles.
Sequence	GLRGVPLLEW ETEVEMDKLR ASDIMEPNLT YVYPHTRIQS LVSILRTTVH HAFPVVTENR GNEKEFMKGN QLISNNIKFK KSSILTRAGE QRKRSQSMKS YPSSELRNMC DEHIASEEPA EKEDLLQQML ERRYTPYPNL YPDQSPSEDW TMEERFRPLT FHGLILRSQL

image



Background

Alternative Names Chloride transport protein 6 (Chloride channel protein 6) (ClC-6)

Note

For Research Use Only , Not for Diagnostic Use

Product Name: Recombinant Human CLCN6 Protein
Catalog #: PEH6798

