

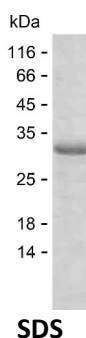
Product Name: Recombinant Human CD300LB Protein
Catalog #: PEH6795



Summary

Name	CLM7_HUMAN
Purity	Greater than 85% as determined by reducing SDS-PAGE
Endotoxin level	Please contact with the lab for this information
Tag	N-SUMO & C-His
Accession #	A8K4G0
Host	E.coli
Species	Human
Molecular Mass	25 kDa
Buffer	Lyophilized from Phosphate buffered saline
Shipping	The product is shipped on dry ice/polar packs. Upon receipt, store it immediately at the temperature listed below.
Stability&Storage	Store at $\leq -70^{\circ}\text{C}$, stable for 12 months after receipt. Store at $\leq -70^{\circ}\text{C}$, stable for 3 months under sterile conditions after opening. Please minimize freeze-thaw cycles.
Sequence	PESVRAPEQG SLTVQCHYKQ GWETYIKWWC RGVRWDTCKI LIETRGSEQG EKSDRVSIKD NQKDRFTFTVT MEGLRRDDAD VYWCGIERRG PDLGTQVKVI VDPEGAASTT

image



Background

Alternative Names	CMRF35-like molecule 7 (CLM-7) (CD300 antigen-like family member B) (CMRF35-A2) (Immune receptor expressed on myeloid cells 3) (IREM-3) (Leukocyte mono-Ig-like receptor 5) (Triggering receptor expressed on myeloid cells 5) (TREM-5) (CD antigen CD300b)
--------------------------	---

Note

Product Name: Recombinant Human CD300LB Protein
Catalog #: PEH6795



For Research Use Only , Not for Diagnostic Use