

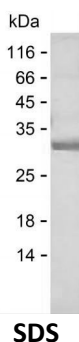
Product Name: Recombinant Human CD300LD Protein
Catalog #: PEH6792



Summary

Name	CLM5_HUMAN
Purity	Greater than 85% as determined by reducing SDS-PAGE
Endotoxin level	Please contact with the lab for this information
Tag	N-SUMO & C-His
Accession #	Q6UXZ3
Host	E.coli
Species	Human
Molecular Mass	25 kDa
Buffer	Phosphate buffered saline
Shipping	The product is shipped on dry ice/polar packs. Upon receipt, store it immediately at the temperature listed below.
Stability&Storage	Store at $\leq -70^{\circ}\text{C}$, stable for 6 months after receipt. Store at $\leq -70^{\circ}\text{C}$, stable for 3 months under sterile conditions after opening. Please minimize freeze-thaw cycles.
Sequence	ITGPTTVNGS EQGSLTVQCA YGSGWETYLK WRCQGADWNY CNILVKTNGS EQEVKKNRVS IRDNQKNHVF TVTMENLKRD DADSYWCGTE RPGIDLGVKV

image



Background

Alternative Names CMRF35-like molecule 5 (CLM-5) (CD300 antigen-like family member D) (CMRF35-A4) (CD antigen CD300d)

Note

For Research Use Only , Not for Diagnostic Use