

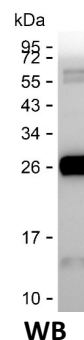
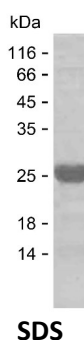
Product Name: Recombinant Human CCL4L2 Protein
Catalog #: PEH6778



Summary

Name	CC4L_HUMAN
Purity	Greater than 85% as determined by reducing SDS-PAGE
Endotoxin level	Please contact with the lab for this information
Tag	N-SUMO & C-His
Accession #	Q8NHW4
Host	E.coli
Species	Human
Molecular Mass	20 kDa
Buffer	Lyophilized from Phosphate buffered saline
Shipping	The product is shipped on dry ice/polar packs. Upon receipt, store it immediately at the temperature listed below.
Stability&Storage	Store at $\leq -70^{\circ}\text{C}$, stable for 12 months after receipt. Store at $\leq -70^{\circ}\text{C}$, stable for 3 months under sterile conditions after opening. Please minimize freeze-thaw cycles.
Sequence	APMGSDPPTA CCFSYTARKL PRNFVVDYYE TSSLCSQPAV VFQTKRGKQV CADPSESWWQ EYVYDLELN

image



Background

Alternative Names	C-C motif chemokine 4-like (Lymphocyte activation gene 1 protein) (LAG-1) (Macrophage inflammatory protein 1-beta) (MIP-1-beta) (Monocyte adherence-induced protein 5-alpha) (Small-inducible cytokine A4-like)
--------------------------	---

Note

For Research Use Only , Not for Diagnostic Use