

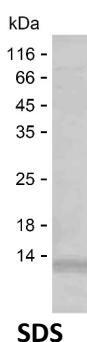
Product Name: Recombinant Human BET1L Protein
Catalog #: PEH6746



Summary

Name	BET1L_HUMAN
Purity	Greater than 85% as determined by reducing SDS-PAGE
Endotoxin level	Please contact with the lab for this information
Tag	C-His
Accession #	Q9NYM9
Host	E.coli
Species	Human
Molecular Mass	10 kDa
Buffer	Lyophilized from Phosphate buffered saline
Shipping	The product is shipped on dry ice/polar packs.Upon receipt, store it immediately at the temperature listed below.
Stability&Storage	Store at $\leq -70^{\circ}\text{C}$, stable for 12 months after receipt.Store at $\leq -70^{\circ}\text{C}$, stable for 3 months under sterile conditions after opening. Please minimize freeze-thaw cycles.
Sequence	GAVEEILDRE NKRMDASLAS KVTRLKSLAL DIDRDAEDQN RYLDGMDSDF TSMTSLLTGS VKRFSTMARS

image



Background

Alternative Names BET1-like protein (Golgi SNARE with a size of 15 kDa) (GOS-15) (GS15)
(Vesicle transport protein GOS15)

Note

For Research Use Only , Not for Diagnostic Use