

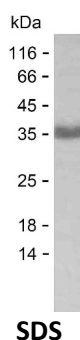
**Product Name: Recombinant Human CLEC6A Protein**  
**Catalog #: PEH6726**



## Summary

<b>Name</b>	CLC6A_HUMAN
<b>Purity</b>	Greater than 85% as determined by reducing SDS-PAGE
<b>Endotoxin level</b>	Please contact with the lab for this information
<b>Tag</b>	N-SUMO & C-His
<b>Accession #</b>	Q6EIG7
<b>Host</b>	E.coli
<b>Species</b>	Human
<b>Molecular Mass</b>	31 kDa
<b>Buffer</b>	Phosphate buffered saline
<b>Shipping</b>	The product is shipped on dry ice/polar packs. Upon receipt, store it immediately at the temperature listed below.
<b>Stability&amp;Storage</b>	Store at $\leq -70^{\circ}\text{C}$ , stable for 6 months after receipt. Store at $\leq -70^{\circ}\text{C}$ , stable for 3 months under sterile conditions after opening. Please minimize freeze-thaw cycles.
<b>Sequence</b>	GKRLSELHSY HSSLTCFSEG TKVPAWGCCP ASWKSFGSSC YFISSEKVV SKSEQNCVEM GAHLVVFNTE AEQNFIVQQL NESFSYFLGL SDPQGNNNWQ WIDKTPYEKN VRFWHLGEPN HSAEQCASIV FWKPTGWGWN DVICETRRNS

## image



## Background

<b>Alternative Names</b>	C-type lectin domain family 6 member A (C-type lectin superfamily member 10) (Dendritic cell-associated C-type lectin 2) (DC-associated C-type lectin 2) (Dectin-2)
--------------------------	---

## Note

For Research Use Only , Not for Diagnostic Use

**Product Name: Recombinant Human CLEC6A Protein**  
**Catalog #: PEH6726**

---

