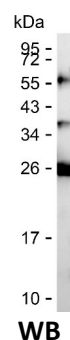
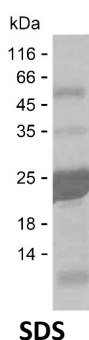


Summary

Name	CXCL2_HUMAN
Purity	Greater than 85% as determined by reducing SDS-PAGE
Endotoxin level	Please contact with the lab for this information
Tag	N-SUMO & C-His
Accession #	P19875
Host	E.coli
Species	Human
Molecular Mass	20 kDa
Buffer	Phosphate buffered saline
Shipping	The product is shipped on dry ice/polar packs. Upon receipt, store it immediately at the temperature listed below.
Stability&Storage	Store at $\leq -70^{\circ}\text{C}$, stable for 6 months after receipt. Store at $\leq -70^{\circ}\text{C}$, stable for 3 months under sterile conditions after opening. Please minimize freeze-thaw cycles.
Sequence	APLATELRRCQ CLQTLQGIHL KNIQSVKVKVKS PGPHCAQTEV IATLKNGQKA CLNPASPMVK KIIKMLKNG KSN

image



Background

Alternative Names	C-X-C motif chemokine 2 (Growth-regulated protein beta) (Gro-beta) (Macrophage inflammatory protein 2-alpha) (MIP2-alpha) [Cleaved into: GRO-beta(5-73) (GRO-beta-T) (Hematopoietic synergistic factor) (HSF) (SB-251353)]
--------------------------	--

Note

For Research Use Only , Not for Diagnostic Use

Product Name: Recombinant Human CXCL2 Protein
Catalog #: PEH6673

