

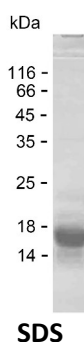
Product Name: Recombinant Human NAALADL1 Protein
Catalog #: PEH6641



Summary

Name	NALDL_HUMAN
Purity	Greater than 85% as determined by reducing SDS-PAGE
Endotoxin level	Please contact with the lab for this information
Tag	C-His
Accession #	Q9UQQ1
Host	E.coli
Species	Human
Molecular Mass	12 kDa
Buffer	Phosphate buffered saline
Shipping	The product is shipped on dry ice/polar packs. Upon receipt, store it immediately at the temperature listed below.
Stability&Storage	Store at $\leq -70^{\circ}\text{C}$, stable for 6 months after receipt. Store at $\leq -70^{\circ}\text{C}$, stable for 3 months under sterile conditions after opening. Please minimize freeze-thaw cycles.
Sequence	DLEILETVMG QLDAHRIREN LRELSREPHL ASSPRDEDLV QLLQRWKDP ESGLDSAEAS TYEVLLSFPS QEQPNVVDIV GPTGGIIHSC HRTEENVGTGE

image



Background

Alternative Names	Aminopeptidase NAALADL1 (EC 3.4.11.-) (100 kDa ileum brush border membrane protein) (I100) (Ileal dipeptidylpeptidase) (N-acetylated-alpha-linked acidic dipeptidase-like protein) (NAALADase L)
--------------------------	--

Note

For Research Use Only , Not for Diagnostic Use