

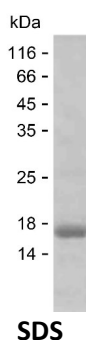
Product Name: Recombinant Human MEF2A Protein
Catalog #: PEH6632



Summary

Name	MEF2A_HUMAN
Purity	Greater than 85% as determined by reducing SDS-PAGE
Endotoxin level	Please contact with the lab for this information
Tag	C-His
Accession #	Q02078
Host	E.coli
Species	Human
Molecular Mass	13 kDa
Buffer	Phosphate buffered saline
Shipping	The product is shipped on dry ice/polar packs. Upon receipt, store it immediately at the temperature listed below.
Stability&Storage	Store at $\leq -70^{\circ}\text{C}$, stable for 6 months after receipt. Store at $\leq -70^{\circ}\text{C}$, stable for 3 months under sterile conditions after opening. Please minimize freeze-thaw cycles.
Sequence	EYNEPHERST NSDIVEALNK KEHRGCDSPD PDTSYVLTPH TEEKYKKINE EFDNMMRNHK IAPGLPPQNF SMSVTVPVTS PNALSYTNPG SSLVSPSLAA

image



Background

Alternative Names Myocyte-specific enhancer factor 2A (Serum response factor-like protein 1)

Note

For Research Use Only , Not for Diagnostic Use