

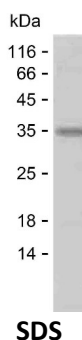
Product Name: Recombinant Human IL36B Protein
Catalog #: PEH6615



Summary

Name	IL36B_HUMAN
Purity	Greater than 85% as determined by reducing SDS-PAGE
Endotoxin level	Please contact with the lab for this information
Tag	N-SUMO & C-His
Accession #	Q9NZH7
Host	E.coli
Species	Human
Molecular Mass	30 kDa
Buffer	Phosphate buffered saline
Shipping	The product is shipped on dry ice/polar packs. Upon receipt, store it immediately at the temperature listed below.
Stability&Storage	Store at $\leq -70^{\circ}\text{C}$, stable for 6 months after receipt. Store at $\leq -70^{\circ}\text{C}$, stable for 3 months under sterile conditions after opening. Please minimize freeze-thaw cycles.
Sequence	REAAPKSYAI RDSRQMVWVL SGNSLIAAPL SRSIKPVT LH LIACRDTEFS DKEKGNMVYL GIKGKDLCLF CAEIQ GKPTL Q LKLQGSQDN IGK DTCWKLV GIHTCINLDV RESCFMG TLD QWGIGVGRKK WKSSFQHHL RKKDKDFSSM RTNIGMPGRM

image



Background

Alternative Names	Interleukin-36 beta (FIL1 eta) (Interleukin-1 eta) (IL-1 eta) (Interleukin-1 family member 8) (IL-1F8) (Interleukin-1 homolog 2) (IL-1H2)
--------------------------	---

Note

For Research Use Only , Not for Diagnostic Use

Product Name: Recombinant Human IL36B Protein
Catalog #: PEH6615

