

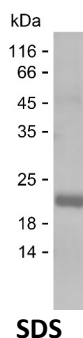
Product Name: Recombinant Human THOC6 Protein
Catalog #: PEH6512



Summary

Name	THOC6_HUMAN
Purity	Greater than 85% as determined by reducing SDS-PAGE
Endotoxin level	Please contact with the lab for this information
Tag	C-His
Accession #	Q86W42
Host	E.coli
Species	Human
Molecular Mass	21 kDa
Buffer	Phosphate buffered saline
Shipping	The product is shipped on dry ice/polar packs. Upon receipt, store it immediately at the temperature listed below.
Stability&Storage	Store at $\leq -70^{\circ}\text{C}$, stable for 6 months after receipt. Store at $\leq -70^{\circ}\text{C}$, stable for 3 months under sterile conditions after opening. Please minimize freeze-thaw cycles.
Sequence	AGNNYGQIAI FSLSSALSSE AKEESKPPV TFQAHDGPVY SMVSTDRHLL SAGDGEVKAW LWAEMLKKGK KELWRRQPPY RTSLEVPEIN ALLLVPKENS LILAGGDCQL HTMDLETGTF TRVLRGHTDY IHCLALRERS PEVLSGGEDG AVRLWDLRTA KEVQTIEVYK

image



Background

Alternative Names THO complex subunit 6 homolog (Functional spliceosome-associated protein 35) (fSAP35) (WD repeat-containing protein 58)

Note

For Research Use Only , Not for Diagnostic Use

Product Name: Recombinant Human THOC6 Protein
Catalog #: PEH6512

