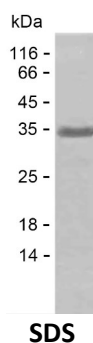


Summary

Name	PTPRE_HUMAN
Purity	Greater than 85% as determined by reducing SDS-PAGE
Endotoxin level	Please contact with the lab for this information
Tag	C-His
Accession #	P23469
Host	E.coli
Species	Human
Molecular Mass	33 kDa
Buffer	Phosphate buffered saline
Shipping	The product is shipped on dry ice/polar packs. Upon receipt, store it immediately at the temperature listed below.
Stability&Storage	Store at $\leq -70^{\circ}\text{C}$, stable for 6 months after receipt. Store at $\leq -70^{\circ}\text{C}$, stable for 3 months under sterile conditions after opening. Please minimize freeze-thaw cycles.
Sequence	RKLTNVRIMK ENMRTGNLPA NMKKARVIQI IPYDFNRVIL SMKRGQEYTD YINASFIDGY RQKDYFIATQ GPLAHTVEDF WRMIWEWKSH TIVMLTEVQE REQDKCYQYW PTEGSVTHGE ITIEIKNDTL SEAISIRDFL VTLNQPQARQ EEQVRVVRQF HFHGWPEIGI PAEGKGMIDL IAAVQKQQQQ TGNHPITVHC SAGAGRTGTF IALSNILERV KAEGLLDVFQ AVKSLRLQRP HMQVTLEQYE FCYKVVQDFI DIFSDYANFK

image



Background

Alternative Names	Receptor-type tyrosine-protein phosphatase epsilon (Protein-tyrosine phosphatase epsilon) (R-PTP-epsilon) (EC 3.1.3.48)
--------------------------	---

Product Name: Recombinant Human PTPRE Protein
Catalog #: PEH6367



Note

For Research Use Only , Not for Diagnostic Use