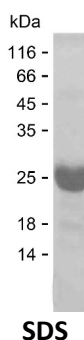


## Summary

<b>Name</b>	UBE2F_HUMAN
<b>Purity</b>	Greater than 85% as determined by reducing SDS-PAGE
<b>Endotoxin level</b>	Please contact with the lab for this information
<b>Tag</b>	C-His
<b>Accession #</b>	Q969M7
<b>Host</b>	E.coli
<b>Species</b>	Human
<b>Molecular Mass</b>	22 kDa
<b>Buffer</b>	Phosphate buffered saline
<b>Shipping</b>	The product is shipped on dry ice/polar packs. Upon receipt, store it immediately at the temperature listed below.
<b>Stability&amp;Storage</b>	Store at $\leq -70^{\circ}\text{C}$ , stable for 6 months after receipt. Store at $\leq -70^{\circ}\text{C}$ , stable for 3 months under sterile conditions after opening. Please minimize freeze-thaw cycles.
<b>Sequence</b>	MLTLASKLKR DDGLKGSRTA ATASDSTRRV SVRDKLLVKE VAELEANLPC TCKVHFPDPN KLHCFQLTVT PDEGYQGGK FQFETEVPDA YNMVPPKVKC LTKIWHPNIT ETGEICLSLL REHSIDGTGW APTRTLKDVV WGLNSLFTDL LNFDDPLNIE AAHHLRDKE DFRNKVDDYI KRYAR

## image



## Background

<b>Alternative Names</b>	NEDD8-conjugating enzyme UBE2F (EC 2.3.2.32) (NEDD8 carrier protein UBE2F) (NEDD8 protein ligase UBE2F) (NEDD8-conjugating enzyme 2) (RING-type E3 NEDD8 transferase UBE2F) (Ubiquitin-conjugating enzyme E2 F)
--------------------------	---

## Note

**Product Name: Recombinant Human UBE2F Protein**  
**Catalog #: PEH6255**



---

For Research Use Only , Not for Diagnostic Use