

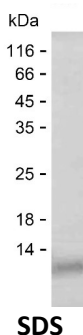
Product Name: Recombinant Human SLC6A20 Protein
Catalog #: PEH6162



Summary

Name	S6A20_HUMAN
Purity	Greater than 85% as determined by reducing SDS-PAGE
Endotoxin level	Please contact with the lab for this information
Tag	C-His
Accession #	Q9NP91
Host	E.coli
Species	Human
Molecular Mass	9 kDa
Buffer	Phosphate buffered saline
Shipping	The product is shipped on dry ice/polar packs. Upon receipt, store it immediately at the temperature listed below.
Stability&Storage	Store at $\leq -70^{\circ}\text{C}$, stable for 6 months after receipt. Store at $\leq -70^{\circ}\text{C}$, stable for 3 months under sterile conditions after opening. Please minimize freeze-thaw cycles.
Sequence	KKVSLLLTNT FDLEDGFLTA SNLEQVKGYL ASAYPSKYSE MFPQIKNCSL ESELDTAVQG

image



Background

Alternative Names	Sodium- and chloride-dependent transporter XTRP3 (Sodium/imino-acid transporter 1) (Solute carrier family 6 member 20) (Transporter rB21A homolog)
--------------------------	--

Note

For Research Use Only , Not for Diagnostic Use