

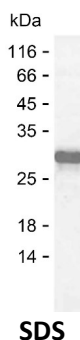
Product Name: Recombinant Human GPR50 Protein
Catalog #: PEH6150



Summary

Name	MTR1L_HUMAN
Purity	Greater than 85% as determined by reducing SDS-PAGE
Endotoxin level	Please contact with the lab for this information
Tag	C-His
Accession #	Q13585
Host	E.coli
Species	Human
Molecular Mass	18 kDa
Buffer	Phosphate buffered saline
Shipping	The product is shipped on dry ice/polar packs. Upon receipt, store it immediately at the temperature listed below.
Stability&Storage	Store at $\leq -70^{\circ}\text{C}$, stable for 6 months after receipt. Store at $\leq -70^{\circ}\text{C}$, stable for 3 months under sterile conditions after opening. Please minimize freeze-thaw cycles.
Sequence	KPDSVHFKPA SSNPKPITGH HVSAGSHSKS AFSAATSHPK PTTGHIKPAT SHAEPPTADY PKPATTSHPK PTAADNPELS ASHCPEIPAI AHPVSDDSDL PESASSPAAG PTKPAASQLE SDTIADLPDP TVVTTSTNDY HDVVVIDVED

image



Background

Alternative Names Melatonin-related receptor (G protein-coupled receptor 50) (H9)

Note

For Research Use Only , Not for Diagnostic Use