

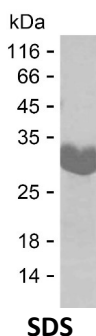
Product Name: Recombinant Human TCL1B Protein
Catalog #: PEH6147



Summary

Name	TCL1B_HUMAN
Purity	Greater than 85% as determined by reducing SDS-PAGE
Endotoxin level	Please contact with the lab for this information
Tag	N-SUMO & N-His
Accession #	O95988
Host	E.coli
Species	Human
Molecular Mass	27 kDa
Buffer	Lyophilized from Phosphate buffered saline
Shipping	The product is shipped on dry ice/polar packs. Upon receipt, store it immediately at the temperature listed below.
Stability&Storage	Store at $\leq -70^{\circ}\text{C}$, stable for 12 months after receipt. Store at $\leq -70^{\circ}\text{C}$, stable for 3 months under sterile conditions after opening. Please minimize freeze-thaw cycles.
Sequence	VPPGRLWIQR PGIYEDEEGR TWVTVVVRFN PSRREWARAS QGSRYEPSIT VHLWQMAVHT RELLSSGQMP FSQLPVWQL YPGRKYRAAD SSFWEIADHG QIDSMEQLVL

image



Background

Alternative Names T-cell leukemia/lymphoma protein 1B (Oncogene TCL-1B) (Oncogene TCL1B) (SYN-1) (Syncytiotrophoblast-specific protein) (TCL1/MTCP1-like protein 1)

Note

For Research Use Only , Not for Diagnostic Use