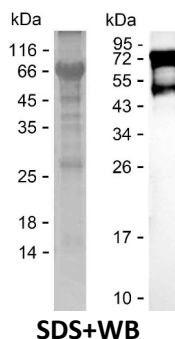


Summary

Name	MLKL_HUMAN
Purity	Greater than 85% as determined by reducing SDS-PAGE
Endotoxin level	Please contact with the lab for this information
Tag	N-SUMO & N-His
Accession #	Q8NB16
Host	E.coli
Species	Human
Molecular Mass	64 kDa
Buffer	Phosphate buffered saline
Shipping	The product is shipped on dry ice/polar packs. Upon receipt, store it immediately at the temperature listed below.
Stability&Storage	Store at $\leq -70^{\circ}\text{C}$, stable for 6 months after receipt. Store at $\leq -70^{\circ}\text{C}$, stable for 3 months under sterile conditions after opening. Please minimize freeze-thaw cycles.
Sequence	MKYCKKQCRR LGHRVLGLIK PLEMLQDQGK RSVPSEKLT AMNRFKAALE EANGEIEKFS NRSNICRFLT ASQDKILFKD VNRKLSDVWK ELSLLQVEQ RMPVSPISQG ASWAQEDQQD AEDRRRAFQM LRRDNEKIEA SLRRLEINMK EIKETLRQYL PPKCMQEIPQ EQIKEIKKEQ LSGSPWILLR ENEVSTLYKG EYHRAPVAIK VFKKLQAGSI AIVRQTFNKE IKTMKKFESP NILRIFGICI DETVTPPQFS IVMEYCELGT LRELLDREKD LTLGKRMVLV LGAARGLYRL HHSEAPELHG KIRSSNFLVT QGYQVKLAGF ELRKTQTSMS LGTTREKTDR VKSTAYLSPQ ELEDVFYQYD VKSEIYSFGI VLWEIATGDI PFQGCNSEKI RKLVAVKRQQ EPLGEDCPSE LREIIDECRA HDPSVRPSVD EILKKLSTFS

image



Background

Product Name: Recombinant Human MLKL Protein
Catalog #: PEH6109



Alternative Names

Mixed lineage kinase domain-like protein (hMLKL)

Note

For Research Use Only , Not for Diagnostic Use