

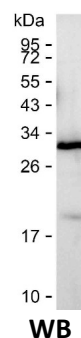
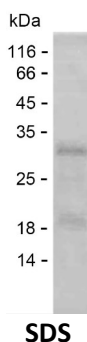
Product Name: Recombinant Human SPDYE21 Protein
Catalog #: PEH6105



Summary

| | |
|------------------------------|--|
| Name | SPD21_HUMAN |
| Purity | Greater than 85% as determined by reducing SDS-PAGE |
| Endotoxin level | Please contact with the lab for this information |
| Tag | N-His |
| Accession # | A0A494C086 |
| Host | E.coli |
| Species | Human |
| Molecular Mass | 21 kDa |
| Buffer | Phosphate buffered saline |
| Shipping | The product is shipped on dry ice/polar packs. Upon receipt, store it immediately at the temperature listed below. |
| Stability&Storage | Store at $\leq -70^{\circ}\text{C}$, stable for 6 months after receipt. Store at $\leq -70^{\circ}\text{C}$, stable for 3 months under sterile conditions after opening. Please minimize freeze-thaw cycles. |
| Sequence | RGQITGKITT SRQLHPQNEQ SPQRSTSGYP LQEVVDDEV L GPSAPGVDP PPCRSLGWKR KKEWSDESEE EPEKELAPEP EETWVETLC GLKMKLKQQR VSPILPEHHK DFNSQLAPGV DPSPPHRSFC WKRKREWWDE SEESLEEEPR KVLAPEPEEI |

image



Background

Alternative Names Putative speedy protein E21

Note

For Research Use Only , Not for Diagnostic Use

Product Name: Recombinant Human SPDYE21 Protein
Catalog #: PEH6105

