

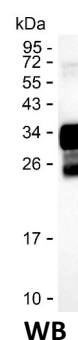
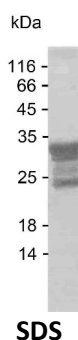
Product Name: Recombinant Human NPPC Protein
Catalog #: PEH6033



Summary

Name	ANFC_HUMAN
Purity	Greater than 85% as determined by reducing SDS-PAGE
Endotoxin level	Please contact with the lab for this information
Tag	N-SUMO & N-His
Accession #	P23582
Host	E.coli
Species	Human
Molecular Mass	23 kDa
Buffer	Lyophilized from Phosphate buffered saline
Shipping	The product is shipped on dry ice/polar packs. Upon receipt, store it immediately at the temperature listed below.
Stability&Storage	Store at $\leq -70^{\circ}\text{C}$, stable for 12 months after receipt. Store at $\leq -70^{\circ}\text{C}$, stable for 3 months under sterile conditions after opening. Please minimize freeze-thaw cycles.
Sequence	VPRTPPAEEL AEPQAAGGGQ KKGDKAPGGG GANLKGDRSR LLRDLRVDTK SRAAWARLLQ EHPNARKYKG ANKKGLSKGC FGLKLDRIQS

image



Background

Alternative Names C-type natriuretic peptide [Cleaved into: CNP-22; CNP-29; CNP-53]

Note

For Research Use Only , Not for Diagnostic Use