

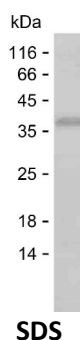
Product Name: Recombinant Human ESM1 Protein
Catalog #: PEH5918



Summary

| | |
|------------------------------|----------------------------------------------------------------------------------------------------------------------------------------------------------------------------------------------------------------|
| Name | ESM1_HUMAN |
| Purity | Greater than 85% as determined by reducing SDS-PAGE |
| Endotoxin level | Please contact with the lab for this information |
| Tag | N-SUMO & C-His |
| Accession # | Q9NQ30 |
| Host | E.coli |
| Species | Human |
| Molecular Mass | 30 kDa |
| Buffer | Phosphate buffered saline |
| Shipping | The product is shipped on dry ice/polar packs. Upon receipt, store it immediately at the temperature listed below. |
| Stability&Storage | Store at $\leq -70^{\circ}\text{C}$, stable for 6 months after receipt. Store at $\leq -70^{\circ}\text{C}$, stable for 3 months under sterile conditions after opening. Please minimize freeze-thaw cycles. |
| Sequence | WSNNYAVDCP QHCDSSECKS SPRCKRTVLD DCGCCRVCAA GRGETCYRTV SGMDGMKCGP GLRCQPSNGE DPFGEFEGIC KDCPYGTFGM DCRETCNCQS GICDRGTGKC LKFPFFQYSV TKSSNRFVSL TEHDMASGDG NIVREEVVKE NAAGSPVMRK WLNPR |

image



Background

Alternative Names Endothelial cell-specific molecule 1 (ESM-1)

Note

For Research Use Only , Not for Diagnostic Use

Product Name: Recombinant Human ESM1 Protein
Catalog #: PEH5918

