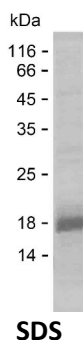


Summary

Name	CD302_HUMAN
Purity	Greater than 85% as determined by reducing SDS-PAGE
Endotoxin level	Please contact with the lab for this information
Tag	C-His
Accession #	Q8IX05
Host	E.coli
Species	Human
Molecular Mass	17 kDa
Buffer	Phosphate buffered saline
Shipping	The product is shipped on dry ice/polar packs. Upon receipt, store it immediately at the temperature listed below.
Stability&Storage	Store at $\leq -70^{\circ}\text{C}$, stable for 6 months after receipt. Store at $\leq -70^{\circ}\text{C}$, stable for 3 months under sterile conditions after opening. Please minimize freeze-thaw cycles.
Sequence	QEAIKVESIE DVRNQCTDHG ADMISIHNEE ENAFILDTLK KQWKGPDDIL LGMFYDTDDA SFKWFDNSNM TFDKWTDQDD DEDLVDTCAF LHIKTGEWKK GNCEVSSVEG TLCKTAIPYK

image



Background

Alternative Names	CD302 antigen (C-type lectin BIMLEC) (C-type lectin domain family 13 member A) (DEC205-associated C-type lectin 1) (Type I transmembrane C-type lectin receptor DCL-1) (CD antigen CD302)
--------------------------	---

Note

For Research Use Only , Not for Diagnostic Use

Product Name: Recombinant Human CD302 Protein
Catalog #: PEH5855

