

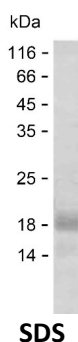
Product Name: Recombinant Human KLF11 Protein
Catalog #: PEH5846



Summary

Name	KLF11_HUMAN
Purity	Greater than 85% as determined by reducing SDS-PAGE
Endotoxin level	Please contact with the lab for this information
Tag	C-His
Accession #	O14901
Host	E.coli
Species	Human
Molecular Mass	15 kDa
Buffer	Phosphate buffered saline
Shipping	The product is shipped on dry ice/polar packs. Upon receipt, store it immediately at the temperature listed below.
Stability&Storage	Store at $\leq -70^{\circ}\text{C}$, stable for 6 months after receipt. Store at $\leq -70^{\circ}\text{C}$, stable for 3 months under sterile conditions after opening. Please minimize freeze-thaw cycles.
Sequence	VTTVHMDAA TPELPKDFHS LSTLCITPPQ SPDLVEPSTR TPVSPQVTDS KACTATDVLQ SSAVVARALS GGAERGLLGL EPVPSSPCRA KGTSVIRHTG ESPAACFPTI QTPDCRLSDS

image



Background

Alternative Names	Krueppel-like factor 11 (Transforming growth factor-beta-inducible early growth response protein 2) (TGFB-inducible early growth response protein 2) (TIEG-2)
--------------------------	---

Note

For Research Use Only , Not for Diagnostic Use

Product Name: Recombinant Human KLF11 Protein
Catalog #: PEH5846

