

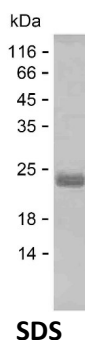
Product Name: Recombinant Human CREG1 Protein
Catalog #: PEH5837



Summary

Name	CREG1_HUMAN
Purity	Greater than 85% as determined by reducing SDS-PAGE
Endotoxin level	Please contact with the lab for this information
Tag	C-His
Accession #	O75629
Host	E.coli
Species	Human
Molecular Mass	22 kDa
Buffer	Phosphate buffered saline
Shipping	The product is shipped on dry ice/polar packs. Upon receipt, store it immediately at the temperature listed below.
Stability&Storage	Store at $\leq -70^{\circ}\text{C}$, stable for 6 months after receipt. Store at $\leq -70^{\circ}\text{C}$, stable for 3 months under sterile conditions after opening. Please minimize freeze-thaw cycles.
Sequence	RGGRDHGDWD EASRLPPLPP REDAARVARF VTHVSDWGAL ATISTLEAVR GRPFADVLSL SDGPPGAGSG VPFYLSPLQ LSVSNLQENP YATLTMTLAQ TNFCKKHGFD PQSPLCVHIM LSGTVTKVNE TEMDIAKHSL FIRHPEMKTW PSSHNWFFAK LNIITNIWVLD YFGGPKIVTP EEYYNVTVQ

image



Background

Alternative Names Protein CREG1 (Cellular repressor of E1A-stimulated genes 1)

Note

For Research Use Only , Not for Diagnostic Use

Product Name: Recombinant Human CREG1 Protein
Catalog #: PEH5837

