

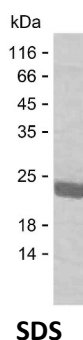
Product Name: Recombinant Human BCL2L10 Protein
Catalog #: PEH5807



Summary

Name	B2L10_HUMAN
Purity	Greater than 85% as determined by reducing SDS-PAGE
Endotoxin level	Please contact with the lab for this information
Tag	C-His
Accession #	Q9HD36
Host	E.coli
Species	Human
Molecular Mass	21 kDa
Buffer	Phosphate buffered saline
Shipping	The product is shipped on dry ice/polar packs. Upon receipt, store it immediately at the temperature listed below.
Stability&Storage	Store at $\leq -70^{\circ}\text{C}$, stable for 6 months after receipt. Store at $\leq -70^{\circ}\text{C}$, stable for 3 months under sterile conditions after opening. Please minimize freeze-thaw cycles.
Sequence	MADPLRERTE LLLADYLGYC AREPGTPEPA PSTPEAAVLR SAAARLRQIH RSFFSAYLGY PGNRFELVAL MADSVLSDSP GPTWGRVVTI VTFAGTLER GPLVTARWKK WGFQPRLEQ EGDVARDCQR LVALLSSRLM GQHRAWLQAQ GGWDGFCHFF RTPFPLAFWR

image



Background

Alternative Names Bcl-2-like protein 10 (Bcl2-L-10) (Anti-apoptotic protein NrH) (Apoptosis regulator Bcl-B)

Note

For Research Use Only , Not for Diagnostic Use

Product Name: Recombinant Human BCL2L10 Protein
Catalog #: PEH5807

