

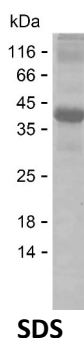
Product Name: Recombinant Human LIPI Protein
Catalog #: PEH5803



Summary

Name	LIPI_HUMAN
Purity	Greater than 85% as determined by reducing SDS-PAGE
Endotoxin level	Please contact with the lab for this information
Tag	N-SUMO & C-His
Accession #	Q6XZB0
Host	E.coli
Species	Human
Molecular Mass	36 kDa
Buffer	Lyophilized from Phosphate buffered saline
Shipping	The product is shipped on dry ice/polar packs. Upon receipt, store it immediately at the temperature listed below.
Stability&Storage	Store at $\leq -70^{\circ}\text{C}$, stable for 12 months after receipt. Store at $\leq -70^{\circ}\text{C}$, stable for 3 months under sterile conditions after opening. Please minimize freeze-thaw cycles.
Sequence	GLDPAGPRFS RKPPYSRLDY TDAKFVDVIH SDSNGLGIQE PLGHIDFYFN GGNKQPGCPK SIFSGIQFIK CNHQRAVHLF MASLETNCNF ISFPCRSYKD YKTSLCVDCD CFKEKSCPRL GYQAKLFKGV LKERMEGRPL RTTVFLDTSG TYPFCTYYFV LSIIVPDKTM MDGSFSFKLL NQLGMIEEPR LYEKNKPFYK

image



Background

Alternative Names	Lipase member I (LIPI) (EC 3.1.1.-) (Cancer/testis antigen 17) (CT17) (LPD lipase) (Membrane-associated phosphatidic acid-selective phospholipase A1-beta) (mPA-PLA1 beta)
--------------------------	--

Note

Product Name: Recombinant Human LIPI Protein
Catalog #: PEH5803



For Research Use Only , Not for Diagnostic Use