

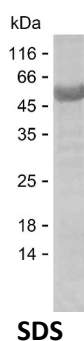
**Product Name: Recombinant Human CTSE Protein**  
**Catalog #: PEH5776**



## Summary

<b>Name</b>	CATE_HUMAN
<b>Purity</b>	Greater than 85% as determined by reducing SDS-PAGE
<b>Endotoxin level</b>	Please contact with the lab for this information
<b>Tag</b>	N-SUMO & C-His
<b>Accession #</b>	P14091
<b>Host</b>	E.coli
<b>Species</b>	Human
<b>Molecular Mass</b>	48 kDa
<b>Buffer</b>	Lyophilized from Phosphate buffered saline
<b>Shipping</b>	The product is shipped on dry ice/polar packs. Upon receipt, store it immediately at the temperature listed below.
<b>Stability&amp;Storage</b>	Store at $\leq -70^{\circ}\text{C}$ , stable for 12 months after receipt. Store at $\leq -70^{\circ}\text{C}$ , stable for 3 months under sterile conditions after opening. Please minimize freeze-thaw cycles.
<b>Sequence</b>	INYLDMEYFG TISIGSPPQN FTVIFDTGSS NLWVPSVYCT SPACKTHSRF QPSQSSTYSQ PGQSFSIQYG TGSLSGIIGA DQVSVEGLTV VGQQFGESVT EPGQTFVDAE FDGILGLGYP SLAVGGVTPV FDNMMAQNLV DLPMFSVYMS SNPEGGAGSE LIFGGYDHSF FSGSLNWVPV TKQAYWQIAL DNIQVGGTVM FCSEGCQAIV DTGTSITGP SDKIKQLQNA IGAAPVDGEY AVECANLNVM PDVTFTINGV PYTLSPTAYT LLDFVDGMQF CSSGFQGLDI HPPAGPLWIL GDVFIRQFYS VFDRGNNRVG

## image



## Background

**Alternative Names** Cathepsin E (EC 3.4.23.34) [Cleaved into: Cathepsin E form I; Cathepsin E form II]

**Product Name: Recombinant Human CTSE Protein**  
**Catalog #: PEH5776**

---



**Note**

For Research Use Only , Not for Diagnostic Use