

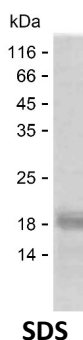
Product Name: Recombinant Human IGHA1 Protein
Catalog #: PEH5738



Summary

Name	IGHA1_HUMAN
Purity	Greater than 85% as determined by reducing SDS-PAGE
Endotoxin level	Please contact with the lab for this information
Tag	C-His
Accession #	P01876
Host	E.coli
Species	Human
Molecular Mass	16 kDa
Buffer	Lyophilized from Phosphate buffered saline
Shipping	The product is shipped on dry ice/polar packs. Upon receipt, store it immediately at the temperature listed below.
Stability&Storage	Store at $\leq -70^{\circ}\text{C}$, stable for 12 months after receipt. Store at $\leq -70^{\circ}\text{C}$, stable for 3 months under sterile conditions after opening. Please minimize freeze-thaw cycles.
Sequence	HLLPPPSEEL ALNELVTLTC LARGFSPKDV LVRWLQGSQE LPREKYLTWA SRQEPSQGTT TFAVTSILRV AAEDWKKGDT FSCMVGHEAL PLAFTQKTID RLAGKPTHVN VSVVMAEVDG TCY

image



Background

Alternative Names Immunoglobulin heavy constant alpha 1 (Ig alpha-1 chain C region) (Ig alpha-1 chain C region BUR) (Ig alpha-1 chain C region TRO)

Note

For Research Use Only , Not for Diagnostic Use