

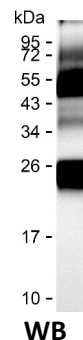
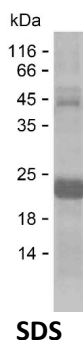
Product Name: Recombinant Human LRRC3 Protein
Catalog #: PEH5625



Summary

Name	LRRC3_HUMAN
Purity	Greater than 85% as determined by reducing SDS-PAGE
Endotoxin level	Please contact with the lab for this information
Tag	C-His
Accession #	Q9BY71
Host	E.coli
Species	Human
Molecular Mass	20 kDa
Buffer	Phosphate buffered saline
Shipping	The product is shipped on dry ice/polar packs. Upon receipt, store it immediately at the temperature listed below.
Stability&Storage	Store at $\leq -70^{\circ}\text{C}$, stable for 6 months after receipt. Store at $\leq -70^{\circ}\text{C}$, stable for 3 months under sterile conditions after opening. Please minimize freeze-thaw cycles.
Sequence	DHAGAVAVFC SLRGLQEVPE DIPANTVLLK LDANKISHLP DGAFQHLHRL RELDLSHNAI EAIGSATFAG LAGGLRLDL SYNRIQRIPK DALGKLSAKI RLSHNPLHCE CALQEALWEL KLDPDSVDEI ACHTSVQEEF VGKPLVQALD AGASLCSVPH

image



Background

Alternative Names Leucine-rich repeat-containing protein 3

Note

For Research Use Only , Not for Diagnostic Use

Product Name: Recombinant Human LRRC3 Protein
Catalog #: PEH5625

