

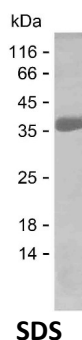
Product Name: Recombinant Human CRH Protein
Catalog #: PEH5622



Summary

Name	CRF_HUMAN
Purity	Greater than 85% as determined by reducing SDS-PAGE
Endotoxin level	Please contact with the lab for this information
Tag	N-mSUMO & C-His
Accession #	P06850
Host	E.coli
Species	Human
Molecular Mass	31 kDa
Buffer	Lyophilized from Phosphate buffered saline
Shipping	The product is shipped on dry ice/polar packs. Upon receipt, store it immediately at the temperature listed below.
Stability&Storage	Store at $\leq -70^{\circ}\text{C}$, stable for 12 months after receipt. Store at $\leq -70^{\circ}\text{C}$, stable for 3 months under sterile conditions after opening. Please minimize freeze-thaw cycles.
Sequence	VPGARQAPQH PQPLDFFQPP PQSEQPQQPQ ARPVLLRMGE EYFLRLGNLN KSPAAPLSPA SSLLAGGSGS RPSPEQATAN FFRVLLQQLL LPRSLDSPA ALAERGARNA LGGHQEAPER ERRSEPPIS LDLTFHLLRE VLEMARAEQL AQQAHSNRKL

image



Background

Alternative Names Corticoliberin (Corticotropin-releasing factor) (CRF) (Corticotropin-releasing hormone)

Note

For Research Use Only , Not for Diagnostic Use

Product Name: Recombinant Human CRH Protein
Catalog #: PEH5622

