

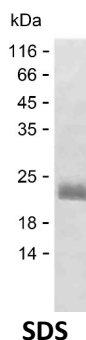
**Product Name: Recombinant Human SLC25A25 Protein**  
**Catalog #: PEH5620**



## Summary

<b>Name</b>	SCMC2_HUMAN
<b>Purity</b>	Greater than 85% as determined by reducing SDS-PAGE
<b>Endotoxin level</b>	Please contact with the lab for this information
<b>Tag</b>	C-His
<b>Accession #</b>	Q6KCM7
<b>Host</b>	E.coli
<b>Species</b>	Human
<b>Molecular Mass</b>	23 kDa
<b>Buffer</b>	Phosphate buffered saline
<b>Shipping</b>	The product is shipped on dry ice/polar packs. Upon receipt, store it immediately at the temperature listed below.
<b>Stability&amp;Storage</b>	Store at $\leq -70^{\circ}\text{C}$ , stable for 6 months after receipt. Store at $\leq -70^{\circ}\text{C}$ , stable for 3 months under sterile conditions after opening. Please minimize freeze-thaw cycles.
<b>Sequence</b>	IGEAQTEFQY FESKGLPAEL KSIFKLSVFI PSQEFSTYRQ WKQKIVQAGD KDLDGQLDFE EFVHYLQDHE KKLRLVFKSL DKKNDGRIDA QEIMQSLRDL GVKISEQQAE KILKSMCKNG TMTIDWNEW R DYHLLHPVEN IPEILYWKH STIFDVGENL TVPDEFTVEE

## image



## Background

<b>Alternative Names</b>	Calcium-binding mitochondrial carrier protein SCaMC-2 (Mitochondrial ATP-Mg/Pi carrier protein 3) (Mitochondrial Ca(2+)-dependent solute carrier protein 3) (Small calcium-binding mitochondrial carrier protein 2) (Solute carrier family 25 member 25)
--------------------------	--

**Product Name: Recombinant Human SLC25A25 Protein**  
**Catalog #: PEH5620**

---



**Note**

For Research Use Only , Not for Diagnostic Use