

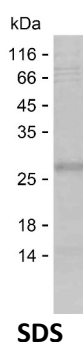
**Product Name: Recombinant Human RETNLB Protein**  
**Catalog #: PEH5619**



## Summary

<b>Name</b>	RETNB_HUMAN
<b>Purity</b>	Greater than 85% as determined by reducing SDS-PAGE
<b>Endotoxin level</b>	Please contact with the lab for this information
<b>Tag</b>	N-SUMO & C-His
<b>Accession #</b>	Q9BQ08
<b>Host</b>	E.coli
<b>Species</b>	Human
<b>Molecular Mass</b>	21 kDa
<b>Buffer</b>	Lyophilized from Phosphate buffered saline
<b>Shipping</b>	The product is shipped on dry ice/polar packs. Upon receipt, store it immediately at the temperature listed below.
<b>Stability&amp;Storage</b>	Store at $\leq -70^{\circ}\text{C}$ , stable for 12 months after receipt. Store at $\leq -70^{\circ}\text{C}$ , stable for 3 months under sterile conditions after opening. Please minimize freeze-thaw cycles.
<b>Sequence</b>	QCCLDSVMDK KIKDVLNSLE YSPISKKL SCASVKSQGR PSSCPAGMAV TGCACGYGCG SWDVQLETTTC HCQCSVVDWT TARCCHLT

## image



## Background

<b>Alternative Names</b>	Resistin-like beta (Colon and small intestine-specific cysteine-rich protein) (Colon carcinoma-related gene protein) (Cysteine-rich secreted protein A12-alpha-like 1) (Cysteine-rich secreted protein FIZZ2) (RELMbeta)
--------------------------	--

## Note

For Research Use Only , Not for Diagnostic Use