

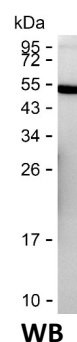
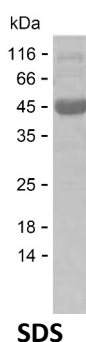
**Product Name: Recombinant Human CXCL12 Protein**  
**Catalog #: PEH5600**



## Summary

<b>Name</b>	SDF1_HUMAN
<b>Purity</b>	Greater than 85% as determined by reducing SDS-PAGE
<b>Endotoxin level</b>	Please contact with the lab for this information
<b>Tag</b>	N-MBP & C-His
<b>Accession #</b>	P48061
<b>Host</b>	E.coli
<b>Species</b>	Human
<b>Molecular Mass</b>	51 kDa
<b>Buffer</b>	Lyophilized from Phosphate buffered saline
<b>Shipping</b>	The product is shipped on dry ice/polar packs. Upon receipt, store it immediately at the temperature listed below.
<b>Stability&amp;Storage</b>	Store at $\leq -70^{\circ}\text{C}$ , stable for 12 months after receipt. Store at $\leq -70^{\circ}\text{C}$ , stable for 3 months under sterile conditions after opening. Please minimize freeze-thaw cycles.
<b>Sequence</b>	KPVLSYRCP CRFFESHVAR ANVKHLKILN TPNCALQIVA RLKNNNRQVC IDPKLKWIQE YLEKALNKRF KM

## image



## Background

<b>Alternative Names</b>	Stromal cell-derived factor 1 (SDF-1) (hSDF-1) (C-X-C motif chemokine 12) (Intercrine reduced in hepatomas) (IRH) (hIRH) (Pre-B cell growth-stimulating factor) (PBSF) [Cleaved into: SDF-1-beta(3-72); SDF-1-alpha(3-67)]
--------------------------	--

## Note

For Research Use Only , Not for Diagnostic Use