

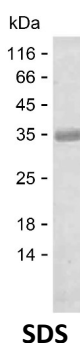
Product Name: Recombinant Human LUC7L2 Protein
Catalog #: PEH5442



Summary

Name	LC7L2_HUMAN
Purity	Greater than 85% as determined by reducing SDS-PAGE
Endotoxin level	Please contact with the lab for this information
Tag	C-His
Accession #	Q9Y383
Host	E.coli
Species	Human
Molecular Mass	30 kDa
Buffer	Phosphate buffered saline
Shipping	The product is shipped on dry ice/polar packs. Upon receipt, store it immediately at the temperature listed below.
Stability&Storage	Store at $\leq -70^{\circ}\text{C}$, stable for 6 months after receipt. Store at $\leq -70^{\circ}\text{C}$, stable for 3 months under sterile conditions after opening. Please minimize freeze-thaw cycles.
Sequence	LDQLMGTSRD GDTTRQRIKF SDDRVCCKSHL LNCCPHDVLS GTRMDLGECL KVHDLALRAD YEIASKEQDF FFELDAMDHL QSFADCDRR TEVAKKRLAE TQEEISAEVA AKAERVHELN EEIGKLLAKV EQLGAEGNVE ESQKVMDEVE KARAKKREAE EVYRNSMPAS SFQQQKLRVC EVCSAYLGLH DNDRLADHF GGKLHLGFIE IREKLEELKR VVAEKQEKRN QERLKRREER

image



Background

Alternative Names Putative RNA-binding protein Luc7-like 2

Note

Product Name: Recombinant Human LUC7L2 Protein
Catalog #: PEH5442



For Research Use Only , Not for Diagnostic Use