

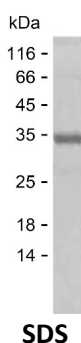
Product Name: Recombinant Human CCPG1 Protein
Catalog #: PEH5416



Summary

Name	CCPG1_HUMAN
Purity	Greater than 85% as determined by reducing SDS-PAGE
Endotoxin level	Please contact with the lab for this information
Tag	C-His
Accession #	Q9ULG6
Host	E.coli
Species	Human
Molecular Mass	28 kDa
Buffer	Lyophilized from Phosphate buffered saline
Shipping	The product is shipped on dry ice/polar packs. Upon receipt, store it immediately at the temperature listed below.
Stability&Storage	Store at $\leq -70^{\circ}\text{C}$, stable for 12 months after receipt. Store at $\leq -70^{\circ}\text{C}$, stable for 3 months under sterile conditions after opening. Please minimize freeze-thaw cycles.
Sequence	YLSQCQQEQE SFIDYKSLKE NLARCWTLTE AEKMSFETQK TNLATENQYL RVSLEKEEKA LSSLQEELNK LREQIRILED KGTSTELVKE NQKLKQHLEE EKQKKHSFSL QRETLLEAK MLKRELERER LVTTALRGEL QQLSGSQLHG KSDSPNVYTE KKEIALRER LTELERKLTFF EQQRSDLWER LYVEAKDQNG KQGTGKGGG GRGSHRAKNK

image



Background

Alternative Names Cell cycle progression protein 1 (Cell cycle progression restoration protein 8)

Note

Product Name: Recombinant Human CCPG1 Protein
Catalog #: PEH5416



For Research Use Only , Not for Diagnostic Use