

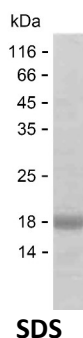
Product Name: Recombinant Human MRS2 Protein
Catalog #: PEH5321



Summary

Name	MRS2_HUMAN
Purity	Greater than 85% as determined by reducing SDS-PAGE
Endotoxin level	Please contact with the lab for this information
Tag	C-His
Accession #	Q9HD23
Host	E.coli
Species	Human
Molecular Mass	19 kDa
Buffer	Lyophilized from Phosphate buffered saline
Shipping	The product is shipped on dry ice/polar packs. Upon receipt, store it immediately at the temperature listed below.
Stability&Storage	Store at $\leq -70^{\circ}\text{C}$, stable for 12 months after receipt. Store at $\leq -70^{\circ}\text{C}$, stable for 3 months under sterile conditions after opening. Please minimize freeze-thaw cycles.
Sequence	LSGEGQLVTY PLPFEFRAIE ALLQYWINTL QGKLSILQPL ILETLDALVD PKHSSVDRSK LHILLQNGKS LSELETDIKI FKESILEILD EEELLEELCV SKWSDPQVFE KSSAGIDHAE EMELLENYY RLADDLSNAA RELRVLIDDS

image



Background

Alternative Names Magnesium transporter MRS2 homolog, mitochondrial (MRS2-like protein)

Note

For Research Use Only , Not for Diagnostic Use